



Philips
LCD monitor with USB-C
Dock

B Line
27" (68.6 cm)
2560 x 1440 (QHD)



272B7QUBHEB

Simplify your connections with USB docking

This Philips monitor offers a simple, one-cable laptop docking solution. One USB dual-mesh cable with Type C and A connectors delivers video, Ethernet, power-charge and DisplayLink functions. Windows Hello webcam offers greater security.

Single cable for USB docking

- Built-in USB docking simplifies your connections
- One USB dual-mesh cable further reduces cable clutter
- USB-C enables laptop power charging directly from monitor
- USB-A with DisplayLink enables existing laptops usage
- USB 3.2 high speed data transfer
- Built in RJ-45 ethernet gives data security

Brilliant performance

- Ultra Wide-Color wider range of colors for a vivid picture
- IPS technology for full colors and wide viewing angles
- LowBlue Mode for easy on-the-eyes productivity
- Securely sign in with pop-up webcam with Windows Hello™
- DisplayPort-out for connecting additional displays

Sustainable Eco-design

- PowerSensor saves up to 70% energy costs

PHILIPS

LCD monitor with USB-C Dock
B Line 27" (68.6 cm), 2560 x 1440 (QHD)

Highlights

USB Docking

Philips USB-docking monitors deliver universal port replication, for a simple, clutter-free, notebook connection. Securely connect to networks, transmit data, video and audio from laptop only using a single USB cable. Even more, dock with USB Type-C port for extra power charging. For docking monitors with built-in DisplayLink Technology, users can benefit from forward and backward compatibility of USB with virtually any latest notebook. USB-docking can boost business productivity and reduce costs.

USB Type-C connection



This Philips display features a built-in USB type-C docking station with power delivery. With intelligent and flexible power management, you can power charge your compatible* laptop directly. Its slim, reversible USB-C connector allows for easy, one-cable docking. Simplify by connecting all your peripherals like keyboard, mouse and your RJ-45 Ethernet cable to the monitor's docking station. You can watch high resolution video and transfer data at a super-speed, while powering up and re-charging your notebook at the same time.

Ultra Wide-Color Technology

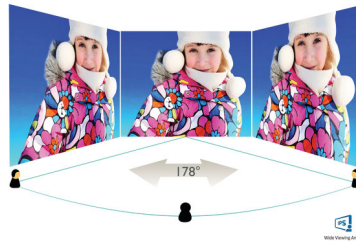



Ultra Wide-Color

Ultra Wide-Color Technology delivers a wider spectrum of colors for a more brilliant picture.

Ultra Wide-Color wider "color gamut" produces more natural-looking greens, vivid reds and deeper blues. Bring, media entertainment, images, and even productivity more alive and vivid colors from Ultra Wide-Color Technology.

IPS technology



IPS displays use an advanced technology which gives you extra wide viewing angles of 178/178 degree, making it possible to view the display from almost any angle - even in 90 degree Pivot mode! Unlike standard TN panels, IPS displays gives you remarkably crisp images with vivid colors, making it ideal not only for Photos, movies and web browsing, but also for professional applications which demand color accuracy and consistent brightness at all times.

LowBlue Mode



Studies have shown that just as ultra-violet rays can cause eye damage, shortwave length blue light rays from LED displays can cause eye damage and affect vision over time. Developed for wellbeing, Philips LowBlue Mode setting uses a smart software technology to reduce harmful shortwave blue light.

272B7QUBHEB/00

Windows Hello™ pop-up webcam

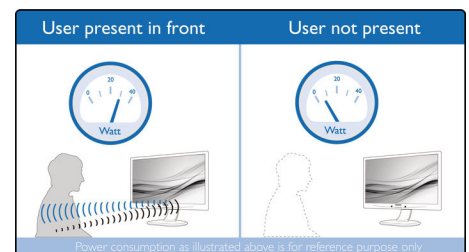


Philips' innovative and secure webcam pops up when you need it and securely tucks back into the monitor when you are not using it. The webcam is also equipped with advanced sensors for Windows Hello™ facial recognition, which conveniently logs you into your Windows devices in less than 2 seconds, 3 times faster than a password.

DisplayPort-out

With DisplayPort-out you can connect multiple high resolution displays with just one cable from your first display to the PC. The ability to daisy chain multiple displays enables you to create a clean desktop without the hassle of too many wires all over.

PowerSensor



PowerSensor is a built-in 'people sensor' that transmits and receives harmless infrared signals to determine if user is present and automatically reduces monitor brightness when user steps away from the desk, cutting energy costs by up to 70 percent and prolonging monitor life.



USB Docking



USB-C



Quad HD



Ultra Wide-Color



LowBlue Mode



Windows Hello



PowerSensor



3-sided Frameless



HDMI™
HIGH DEFINITION MULTIMEDIA INTERFACE

Specifications

Picture/Display

- LCD panel type: IPS technology
- Backlight type: W-LED system
- Panel Size: 27 inch / 68.5 cm
- Display Screen Coating: Anti-Glare, 3H, Haze 25%
- Effective viewing area: 596.7 (H) x 335.7 (V)
- Aspect ratio: 16:9
- Maximum resolution: 2560 x 1440 @ 75 Hz*
- Pixel Density: 109 PPI
- Response time (typical): 5 ms (Gray to Gray)*
- Brightness: 350 cd/m²
- Contrast ratio (typical): 1000:1
- SmartContrast: 50,000,000:1
- Pixel pitch: 0.233 x 0.233 mm
- Viewing angle: 178° (H) / 178° (V), @ C/R > 10
- Flicker-free
- Picture enhancement: SmartImage
- Display colors: 16.7 M
- Color gamut (typical): NTSC 114%*, sRGB 132%*
- Scanning Frequency: 30 - 114 kHz (H) / 48 - 76 Hz (V)
- sRGB
- LowBlue Mode
- EasyRead

Connectivity

- Signal Input: DisplayPort 1.2 x 1, HDMI 1.4 x 1, USB-C 3.2 Gen 2 x 1 (DP Alt mode, power delivery up to 65 W)
- Signal Output: DisplayPort out (DP, USB-C)*
- USB:: USB-C 3.2 x 1 Gen 2 (upstream), USB 3.2 x 4 (downstream, w/ 1 fast charging)
- RJ45: Ethernet LAN up to 1G*
- Sync Input: Separate Sync, Sync on Green
- Audio (In/Out): Audio out
- DC power out: x 1 (support 19V, max 65 W)*

USB

- USB-C to USB-C: Video (DP Alt mode), Data, Power delivery
- USB-C to USB-A: Video, Data
- Power delivery: USB PD version 3.0
- USB-C max. power delivery: Upto 65 watts (5V/3A, 9V/3A, 10V/3A, 12V/3A, 15V/3A, 20V/3.25A)

Convenience

- Built-in Speakers: 2 W x 2
- Built-in webcam: 2.0 megapixel FHD camera with microphone and LED indicator (for Windows 10 Hello)
- User convenience: SmartImage, Input, PowerSensor, Menu, Power On/Off
- Control software: SmartControl
- OSD Languages: Brazil Portuguese, Czech, Dutch, English, Finnish, French, German, Greek, Hungarian, Italian, Japanese, Korean, Polish, Portuguese, Russian, Simplified Chinese, Spanish, Swedish, Traditional Chinese, Turkish, Ukrainian

- Other convenience: Kensington lock, VESA mount (100x100mm)
- Plug & Play Compatibility: DDC/CI, Mac OS X, sRGB, Windows 10 / 8.1 / 8 / 7

Stand

- Height adjustment: 150 mm
- Pivot: 90 degree
- Swivel: -175/175 degree
- Tilt: -5/30 degree

Power

- ECO mode: 20.6 W (typ.)
- On mode: 19.02 W (typ.) (EnergyStar test method)
- Standby mode: < 0.5 W (typ.)
- Off mode: Zero watts with Zero switch
- Energy Label Class: A, F
- Power LED indicator: Operation - White, Standby mode- White (blinking)
- Power supply: Built-in, 100-240VAC, 50-60Hz

Dimensions

- Product with stand(max height): 614 x 548 x 257 mm
- Product without stand (mm): 614 x 372 x 56 mm
- Packaging in mm (WxHxD): 690 x 458 x 252 mm

Weight

- Product with stand (kg): 7.52 kg
- Product without stand (kg): 5.10 kg
- Product with packaging (kg): 10.27 kg

Operating conditions

- Temperature range (operation): 0°C to 40°C °C
- Temperature range (storage): -20°C to 60°C °C
- Relative humidity: 20%-80 %
- Altitude: Operation: +12,000ft (3,658m), Non-operation: +40,000ft (12,192m)
- MTBF (demonstrated): 70,000 hrs (excluded backlight)

Sustainability

- Environmental and energy: PowerSensor, EnergyStar 8.0, EPEAT*, TCO Certified Edge, RoHS, WEEE
- Recyclable packaging material: 100 %
- Post consumer recycled plastic: 85%
- Specific Substances: PVC / BFR free housing, Mercury free

Compliance and standards

- Regulatory Approvals: CE Mark, FCC Class B, SEMKO, cETLus, CU-EAC, TUV Ergo, TUV/GS, EPA, UKRAINIAN, ICES-003, CB

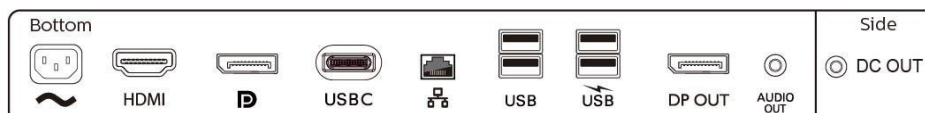
Cabinet

- Front bezel: Black
- Rear cover: Black

- Foot: Black
- Finish: Texture

What's in the box?

- Monitor with stand
- Cables: HDMI cable, DP cable, USB-C to C/A cable, DC out cable, Power cable
- User Documentation



Issue date 2021-02-28

Version: 7.0.1

12 NC: 8670 001 57927
EAN: 87 12581 75674 1

© 2021 Koninklijke Philips N.V.
All Rights reserved.

Specifications are subject to change without notice.
Trademarks are the property of Koninklijke Philips N.V.
or their respective owners.

www.philips.com

- * "IPS" word mark / trademark and related patents on technologies belong to their respective owners.
- * The maximum resolution works for either HDMI, DP or USB-C input.
- * Response time value equal to SmartResponse
- * NTSC Area based on CIE1976
- * sRGB Area based on CIE1931
- * For Video transmission via USB-C, your Notebook/device must support USB-C DP Alt mode
- * For USB-C power and charging function, your Notebook/device must support USB-C standard Power Delivery specifications. Please check with your Notebook user manual or manufacturer for more details.
- * Activities such as screen sharing, on-line streaming video and audio over the Internet can impact your network performance. Your hardware, network bandwidth and its performance will determine overall audio and video quality.
- * DisplayPort out works only under either DP in or USB-C in.
- * DC power out function only supports Intel NUC with 19V, max 65 W. Only one PC or notebook should be connected to either USB-C or DC out port for power passthrough function.
- * If your Ethernet connection seems slow, please enter OSD menu and select USB 3.0 or higher version which can support the LAN speed to 1G.
- * EPEAT rating is valid only where Philips registers the product. Please visit <https://www.epeat.net/> for registration status in your country.
- * The monitor may look different from feature images.