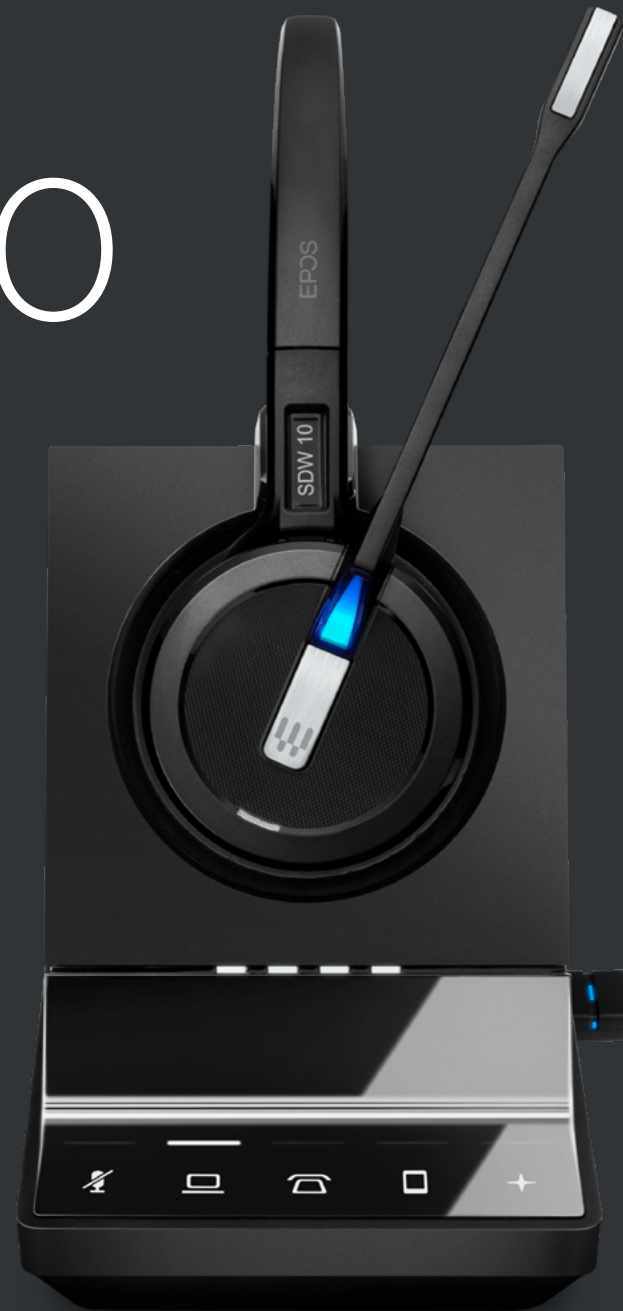


EPOS

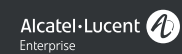
501X Variants

IMPACT 5000 Series

IMPACT SDW 501X is a single-sided wireless DECT headset system for modern office professionals, providing future-proof device flexibility, next generation communication quality and advanced security to modern work environments.



We are rebranding from EPOS | SENNHEISER to EPOS branding on our products. During the transition period the same product may exist in both versions



Key Features



Crisp and natural sound

With super wideband, for voice clarity that exceeds conventional business standards

Sound clarity in high density environments

With high density wideband mode

Hearing protection from acoustic shock

By ensuring that the sound pressure level does not exceed 118 dB

Exceptional speech intelligibility

With two microphone noise-cancelling system and pioneering own-voice detection technology

Manage all calls from one headset

With triple connectivity to computer, desk and mobile phone*

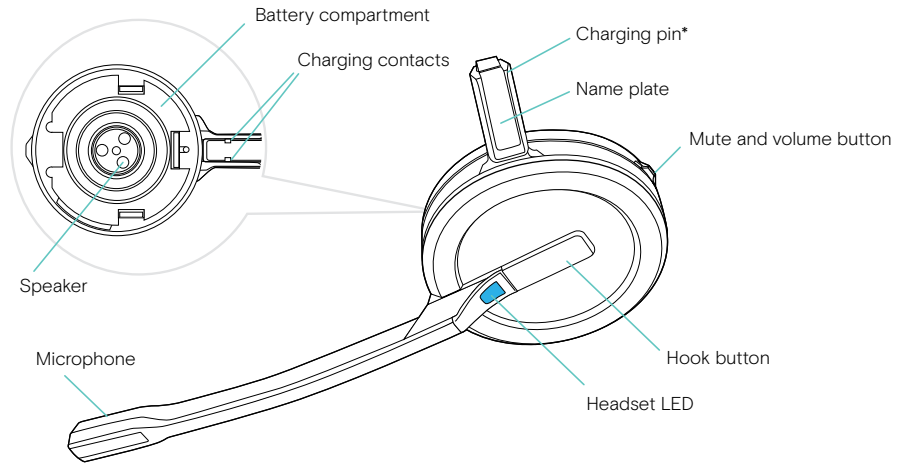
What's in the Box



Items in the box may vary depending on product variant and may include:

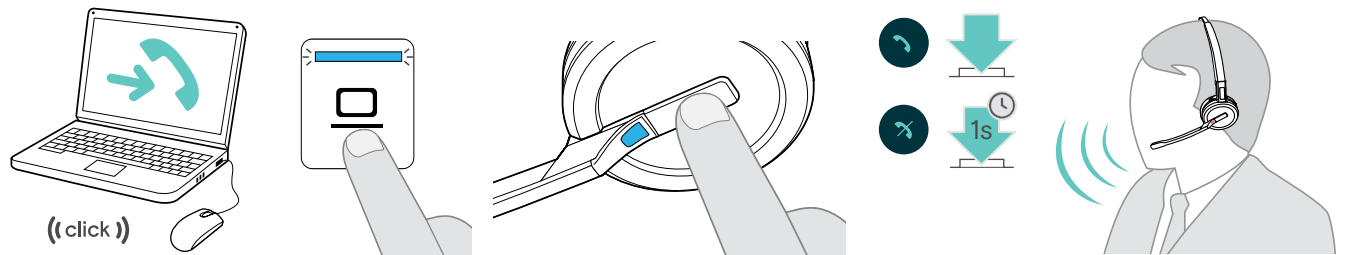
- Power Supply
- Audio Phone Cable
- Extra Earbuds
- Pre-mounted Earhook
- Earhook Stabilizer
- Neckband

How to Use the IMPACT 5000

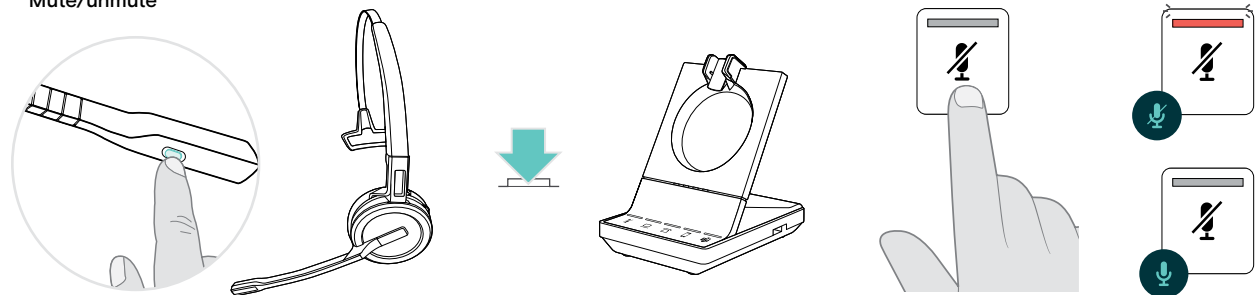


*Inserted into the holder of the headband or wearing style adapter

Accept/end a call



Mute/unmute



Additional benefits & features



Maximum flexibility via one single base station

Works with all IMPACT 5000 headsets and connects to a EPOS Bluetooth® headset or a wired headset or speakerphone



Perfect customized fit

With the FlexFit™ system, offering 3 wearing style solutions. Choose between headband, ear hook or neckband



Undisturbed calls

With a busy light on the headset. A busy light for the desk is available as an accessory



Easy configuration and management

For IT managers with EPOS Manager



Enhanced security

with protected pairing, 128-bit authentication and DECT Security certification to keep all conversations confidential



Long distance wireless range

Up to 180 m/ 590 ft with line of sight



Hot desking

With fast, secure headset pairing



Easy to set up phone conferences

Of up to 4 IMPACT SDW 5000 headsets with the same base station



Full workday of talk time

Up to 10 hours narrowband



Fast charging

With 50 % battery in just 30 minutes

Product data

1/3

General

Wearing style

Single-sided headset with three wearing styles – headband, ear hook and neckband

Headset weight

44 g / 1.55 oz. (Ear hook version) 58 g / 2.05 oz. (Headband version) 43 g / 1.52 oz. (Neckband version)

Audio

Speaker frequency response

100 Hz – 11.0 kHz (Super wideband)
100 Hz – 7,5 kHz (Standard wideband and High density wideband)
150 Hz – 3.5 kHz (Narrowband)

Microphone type

Digital MEMs microphones – two microphone noise-cancelling system for exceptional speech clarity

Microphone frequency response

100 Hz – 11.0 kHz (Super wideband)
100 Hz – 7,5 kHz (Standard wideband and High density wideband)
150 Hz – 3.5 kHz (Narrowband)

Noise cancellation

Two microphone noise-cancelling system

Technical

Charging time

0–50%: 30 minutes | 0–100%: 1 hour

Standby time

Up to 48 hours

Auto sleep mode when out of range

Yes, after 12 hours

Battery time

Up to 10 hours (Narrowband)
Up to 7 hours (Density optimized wideband)
Up to 8 hours (Wideband)
Up to 6 hours (Super wideband)

Automatic power adjustment

Yes (distance between headset and base)

Range

Line of sight: 180 m / 590 ft Typical office building: 55 m / 180 ft

Product data

2/3

Product variants

SDW 5016/SDW 5015

What's in the box

SDW 5 BS Base station, headset, headband, wearing style adapter with pre-mounted earhook, earbud (M) and cheek spacer, ear hook stabilizer, neckband, extra earbuds (S, L), BTD 800 USB dongle (Included in SDW 5016), USB cable, power supply, audio phone cable, quick guides (headset and base station), safety guide, compliance sheet

SDW 5013

SDW 3 BS Base station, headset, headband, wearing style adapter with pre-mounted earhook, earbud (M) and cheek spacer, ear hook stabilizer, neckband, extra earbuds (S, L), BTD 800 USB dongle, USB cable, power supply, audio phone cable, quick guides (headset and base station), safety guide, compliance sheet

Software

EPOS devices can be managed with following Software solutions:

EPOS Connect

Conduct firmware updates and configure headsets for personal audio preferences. EPOS Connect works for Windows, Mac® and VDI/Thin client environments: eposaudio.com/software-epos-connect

EPOS Manager

Manage, update and configure EPOS audio devices from any location - For both cloud and on-premises solutions: eposaudio.com/software-epos-manager

Product data

3/3

Product	Connects to	Certifications	EAN code	UPC code
SDW 5016 - EU/UK/AUS Art. no. 1001024	Desk phone, PC/softphone, mobile devices	Optimized for UC and certified for Webex, Avaya, Alcatel-Lucent Enterprise, Enreach	57 14708 00826 2	8 40064 40826 4
SDW 5016 - US Art. no. 1000621	Desk phone, PC/softphone, mobile devices	Optimized for UC and certified for Webex, Avaya, Alcatel-Lucent Enterprise, Enreach	57 14708 00422 6	8 40064 40422 8
SDW 5015 - EU/UK/AUS Art. no. 1001021	Desk phone, PC/softphone	Optimized for UC and certified for Webex, Avaya, Alcatel-Lucent Enterprise, Enreach	57 14708 00823 1	8 40064 40823 3
SDW 5015 - US Art. no. 1000597	Desk phone, PC/softphone	Optimized for UC and certified for Webex, Avaya, Alcatel-Lucent Enterprise, Enreach	57 14708 00398 4	8 40064 40398 6
SDW 5013 - EU/UK/AUS Art. no. 1001015	PC/softphone	Optimized for UC and certified for Webex, Avaya, Alcatel-Lucent Enterprise, Enreach	57 14708 00817 0	8 40064 40817 2
SDW 5013 - US Art. no. 1000585	PC/softphone	Optimized for UC and certified for Webex, Avaya, Alcatel-Lucent Enterprise, Enreach	57 14708 00386 1	8 40064 40386 3

Spare parts

1/1

Product	Art. no.	Description	EAN code	UPC code
SDW D1 Accessory Pack	1000982	Carry pouch and USB-A charging cable for IMPACT 5000 headsets	57 14708 00784 5	8 40064 40784 7
SDW D1 USB	1000299	USB DECT dongle	57 14708 00100 3	8 40064 40100 5
SDW D1 USB - US	1000978	USB DECT dongle	57 14708 00780 7	8 40064 40780 9
SDW 10 HS	1000631	Headset for SDW 5016, SDW 5015 and SDW 5013 with three wearing styles	57 14708 00432 5	8 40064 40432 7
SDW 5 BS - EU/UK/AUS	1001027	Base station for SDW 5016 and SDW 5015 (without BTD 800 dongle)	57 14708 00829 3	8 40064 40480 8
SDW 5 BS - US	1000681	Base station for SDW 5016 and SDW 5015 (without BTD 800 dongle)	57 14708 00482 0	8 40064 40482 2
SDW 3 BS - EU/UK/AUS	1001028	Base station for SDW 5013 (without BTD 800 dongle)	57 14708 00830 9	8 40064 40830 1
SDW 3 BS - US	1000685	Base station for SDW 5013 (without BTD 800 dongle)	57 14708 00486 8	8 40064 40486 0

Appendix

1/1

Additional product data

EPOS ActiveGard® technology	Protects users against acoustic injury caused by sudden sound burst on the line
DECT	1.880 to 1.900 MHz (EU, UK, AUS) 1.920 to 1.930 MHz (US)
GAP compatible	Yes (Headset)
Base station	SDW 5 BS connects to desk phone, softphone and up to two mobile devices simultaneously (Included in SDW 5016 and SDW 5015) SDW 3 BS connects to softphone/PC and up to two mobile devices devices simultaneously (Included in SDW 5013)
BTD 800 USB dongle	For more information please see eposaudio.com/btd-800-usb (Included in SDW 5016)
USB-A port	Supports call handling with EPOS devices and smartphone charging
Temperature range	Operational: +5 °C to + 45 °C / +41 °F to +113 °F Storage: -20 °C to + 70 °C / -4 °F to +158 °F
Battery (lithium polymer)	Exchangeable by service
Ear pad size	ø 53 mm / 2.09 in
Personalization	Yes with nameplate on headset
Warranty	2 years
EU*/AUS Limiter depending on regional variant	Activation by dip switch, EPOS Connect and EPOS Manager software

* Noise At Work: The EU's „Noise At Work Directive“ (2003/10/EC) sets limits for two types of noise in the workplace: Acoustic burst and Sustained Noise.